

PARI BABY™ REUSABLE NEBULIZER

PART# 22F90

INSTRUCTIONS FOR USE

(SIZE 0)

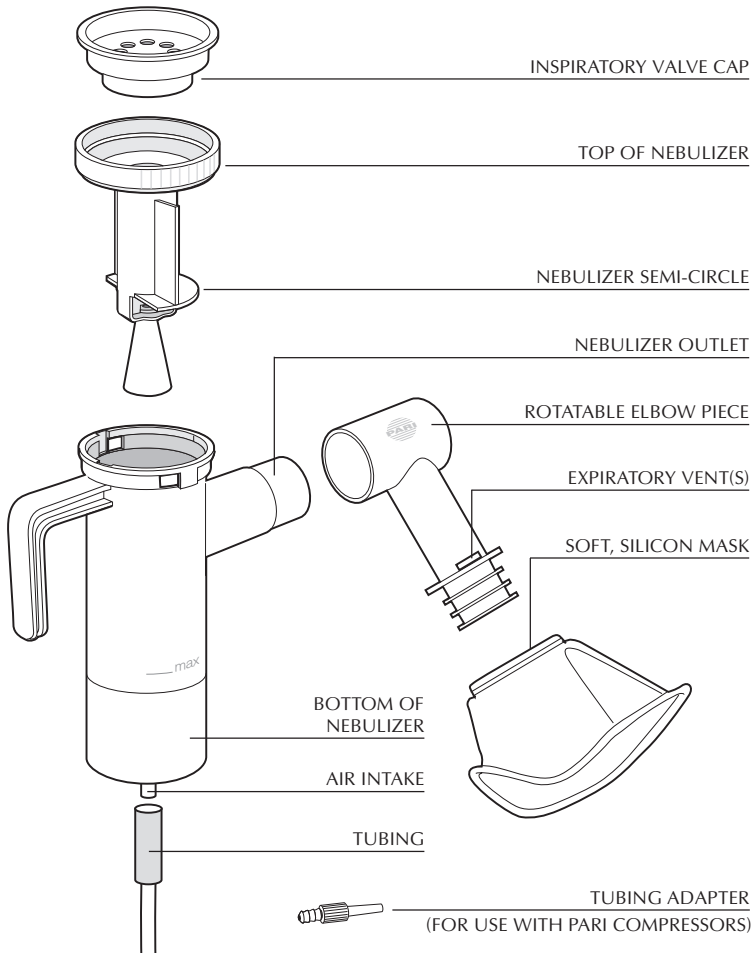
FOR SINGLE PATIENT USE (ONE PERSON) ONLY

PART# 22F91

(SIZE 1)

PART# 22F92

(SIZE 2)



⚠ WARNING

U.S. Federal Law restricts this device to sale by or on the order of a physician. Use only when prescribed by a physician and with the prescribed medication. Read all warnings and instructions before use. Improper use can result in serious or fatal illness or injury. Use only with compressors and tubing authorized by PARI. Other compressors and tubing may produce incorrect liter flow, resulting in improper treatment.

I. SAFETY PRECAUTIONS

⚠ WARNING

Nebulizer for single patient use (one person) only. Do not share the nebulizer with other patients.

To reduce the risk of infection, illness, or injury from contamination, always follow proper procedures for cleaning and disinfecting and/or sterilizing this nebulizer. When in doubt consult your physician.

⚠ WARNING

To reduce the risk of inadequate delivery of medication and improper treatment:

1. Check nebulizer for proper assembly. All parts should be seated firmly in place.
2. This nebulizer is warranted for 6 months with proper cleaning. Never use nebulizer that is older than 12 months or that is damaged or deformed.

II. GETTING STARTED

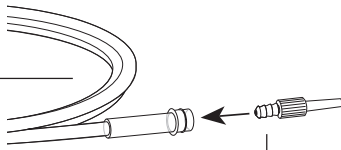
1. Make sure that you have all components illustrated on the front cover. If you did not receive all components, contact the dealer where you purchased your PARI BABY Nebulizer.
2. The Silicon Mask should be just large enough to cover the nose and open mouth of the patient. If the mask is not the correct size, contact the dealer where you purchased your PARI BABY. In general, the following guidelines pertain to the mask sizes:
Mask Size 0 Age: Neonates
Mask Size 1 Age: 1 Month - 1 Year
Mask Size 2 Age: 1 Year - 3 Years
Mask Size 3 or mouthpiece Age: 3+ Years
3. Read these Instructions For Use. Make note of all warnings and safety instructions. If you do not understand any portion of these Instructions For Use, please call PARI Customer Service at 1.800.FAST.NEB (327.8632) or 804.639.7235.
4. Fill out and mail the warranty card.

III. SET-UP

The PARI BABY Nebulizer was designed to be used with a PARI compressor or with the central air supply in a hospital. In order to achieve the specified droplet characteristics with the central air supply, a liter flow of 3.5-6 liters per minute must be selected.

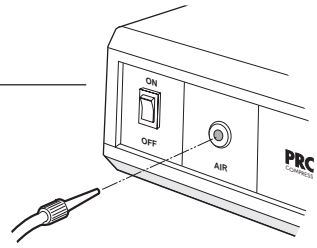
1. Unwind the tubing. For non-PARI compressors, go to step two. For use with the PARI PRONEB™ and PARI Master® compressors a tubing adapter is included. If using these compressors, insert the tubing adapter into one end of the tubing by pushing in firmly (Fig.1).

FIG 1



NOTE: RIDGES GO INTO TUBING

FIG 2



SEMI-CIRCLE

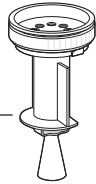


FIG 3

NEBULIZER OUTLET

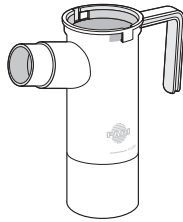


FIG 4

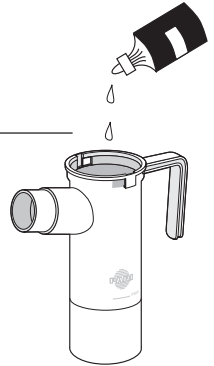


FIG 5

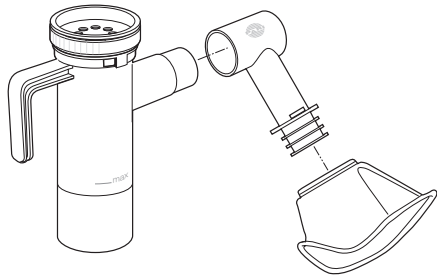


FIG 6

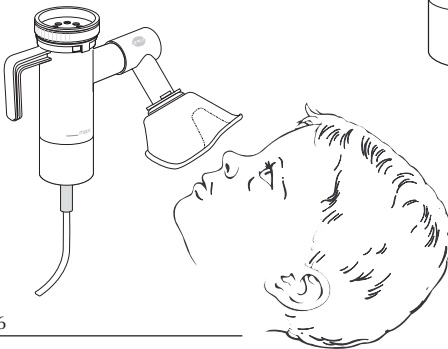
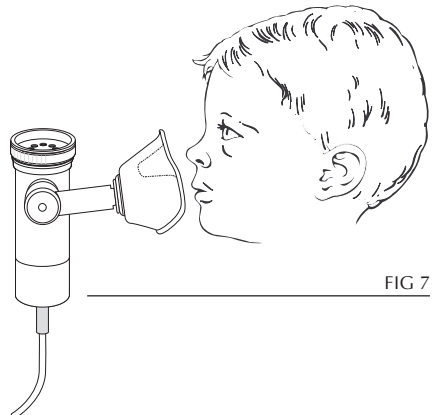


FIG 7



III. SET-UP (CONT.)

2. Insert one end of the tubing directly to the compressor air outlet. Make sure the tubing is firmly inserted or attached (Fig.2).
3. Make sure nebulizer has been cleaned and/or disinfected since last treatment (see opposite page for proper instructions). Remove the top of nebulizer by twisting counter-clockwise until it stops and lift up (Fig.3).
4. Pour prescribed medication into bottom of nebulizer (Fig.4).
5. Replace the top of the nebulizer. **The semi-circle should face the nebulizer outlet.**
6. Attach the Elbow Piece to the nebulizer outlet (Fig. 5), then attach the Silicon Mask by firmly pressing the mask on the Elbow Piece as far as it will go (Elbow Piece and Silicon Mask each rotate 360° to allow flexibility in administering the treatment to the baby or child).
7. Connect the other end of the tubing to the air intake on the bottom of the nebulizer. Press on firmly. **The tubing is also designed to fit snugly on the air intake.**

IV. OPERATING PROCEDURE

The PARI BABY Nebulizer is designed to work with the breathing pattern of the patient for a more efficient treatment. If the inspiratory flow of the patient is sufficiently high, the inspiratory valve on the nebulizer opens, which increases nebulizer output (for low tidal volumes, the valve will not open). When the patient exhales, the valve remains closed, which minimizes the amount of aerosol wastage. The exhaled mist escapes through the two slots on the side of the Elbow Piece.

1. For the treatment, the baby or child should be in a comfortable position: lying down, reclining, sitting, or standing. Adjust the Elbow Piece and mask for the desired position, while keeping the nebulizer upright (Fig. 6-7).
2. Turn on compressor or air source and gently place the Silicon Mask over the patient's face. Allow the patient to breathe normally.
3. Continue to hold the Silicon Mask gently against the patient's face as the patient exhales.
4. Continue steps 2 and 3 for the length of time indicated by the patient's physician. Turn off the compressor or air supply when the treatment is complete.

WARNING

To reduce the risk of choking and asphyxiation, make sure that the slots on the side of the Elbow Piece are not obstructed. If the patient begins to choke, stop treatment immediately and do not continue until condition has been rectified.

V. CLEANING THE PARI BABY

WARNING

1. To reduce the risk of infection, illness, or injury from contamination, you must thoroughly clean all parts of the nebulizer as instructed after each treatment.
 2. Never use a nebulizer with a clogged nozzle. If the nozzle is clogged, no aerosol mist is produced, which will alter the effectiveness of the treatment. Replace with PARI BABY Replacement Nebulizer (See front page for part#) if clogging occurs.
1. Remove tubing from nebulizer and disassemble nebulizer parts as illustrated on front cover.
 2. Wash all parts (except tubing and tubing adapter) with warm water and liquid dish soap.
 3. Rinse thoroughly with warm water and shake out water.
 4. Air dry or hand dry nebulizer parts on a clean, lint-free cloth. Reassemble nebulizer when dry and store.
 5. You can also wash all parts of the nebulizer in a dishwasher. Place the nebulizer parts in a dishwasher basket or baby bottle parts basket, then place on the top rack of the dishwasher. Remove and dry the parts when the cycle is complete.

VI. DISINFECTING AND STERILIZING THE PARI BABY

WARNING, TO REDUCE RISK OF INFECTION:

1. Nebulizer for single patient use (one person) only. Do not share the nebulizer with other patients.
 2. You must regularly disinfect or sterilize the nebulizer between treatments. Failure to do so could lead to serious or fatal illness.
1. Clean the nebulizer as described in section V. Every other treatment day, soak all parts of the PARI BABY Nebulizer (except tubing and tubing adapter) in a solution of 1 part distilled white vinegar and 3 parts hot tap water for 1 hour. You can substitute respiratory equipment disinfectants (like Control III®) for distilled white vinegar (follow manufacturer's instructions for mixing). Rinse all parts of the nebulizer thoroughly with warm tap water and dry with a clean, lint-free cloth. Discard the vinegar solution when disinfection is complete.
 2. The nebulizer parts may also be sterilized by boiling them in water for a full 10 minutes. Hospitals and clinics can sterilize the nebulizer parts (except mask and tubing) by autoclaving with water (a maximum of 277° F), follow autoclave manufacturer's instructions. Dry parts on a clean, lint-free cloth.

CONTROL III® IS A REGISTERED TRADEMARK OF MARIL PRODUCTS, INC.

THIS PARI NEBULIZER INCLUDES A 6 MONTH LIMITED WARRANTY
FOR HOME CARE USE

VII. PROCEDURE FOR RETURNING THE PARI NEBULIZER

1. Contact PARI Customer Service using the telephone numbers below for a *Return Authorization number (*in USA only) and shipping instructions.
2. Clean, disinfect and/or sterilize the PARI Nebulizer as indicated on the previous page. Dry the nebulizer and place in a plastic bag.
3. In writing, describe the malfunction or symptoms of the nebulizer. Include your full name, address and daytime telephone number.
4. Send written description and nebulizer in a protected box or envelope to the address provided by PARI Customer Service.



PARI Respiratory Equipment, Inc.

IN USA: 1.800.FAST.NEB (327.8632), Tel: 804.639.7235 Fax 804.639.7242

IN CANADA: 1.800.825.1637, Tel 905.828.9119, Fax 905.828.3436

DS-22-940 REV.A5/97